

**机械性能**

动作力:  $250 \pm 50 \text{gf}$   
 $150 \pm 50 \text{gf}$   
 电气寿命: 50000次

**工作环境**

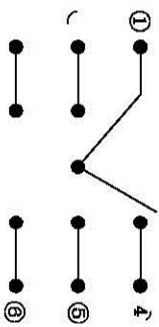
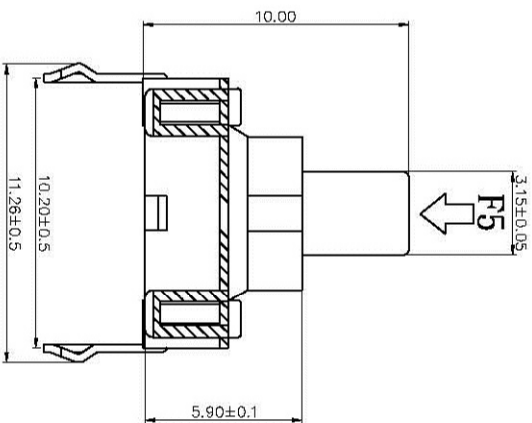
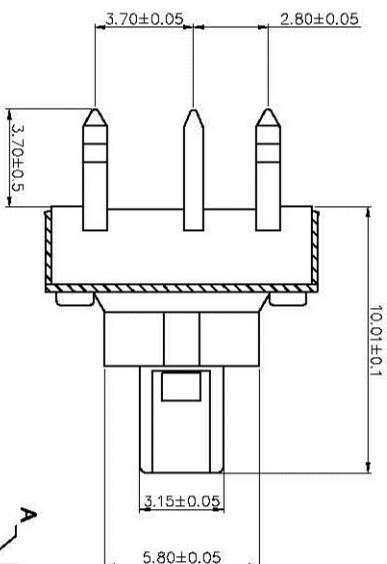
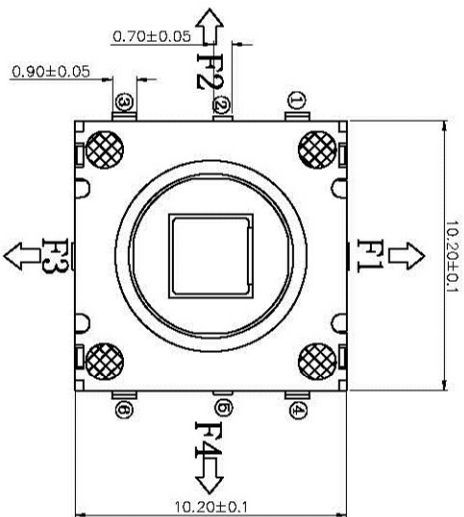
环境温度:  $-25^{\circ}\text{C} \sim 70^{\circ}\text{C}$

**电气性能**

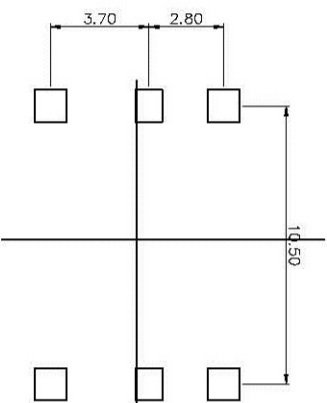
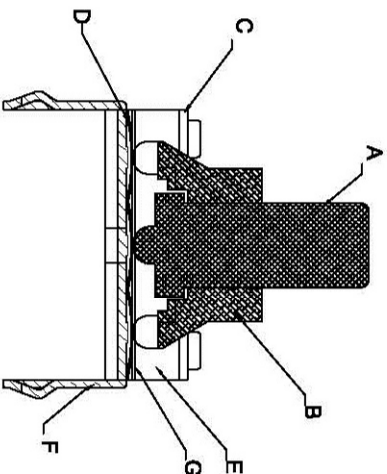
额定电流: 0.1A  
 额定电压: DC12V  
 接触电阻:  $\leq 80 \text{m}\Omega$   
 绝缘电阻:  $\geq 100 \text{M}\Omega$   
 耐压强度: AC100V 50Hz/1min

**物料**

- A. 按钮: PA46
- B. 护套: PA46
- C. 盖板: 不锈钢
- D. 接触簧片: 复银不锈钢
- E. 基座: PA46
- F. 嵌件: 磷铜
- G. 垫片: 覆银铜



	1	2	3	4	5	6
F1	○			○		
F2	○	○				
F3	○					○
F4	○				○	
F5	○		○			



**版本**

**视图**

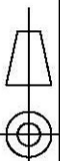
**设计**

敖余达

比例

大小

Dimensions are shown mm(inches)



绘制

敖余达

1:1

A4

审核

徐君辉

深圳市博瑞泰电子有限公司