

**机械性能**

动作力: 250±50gf  
 电气寿命: 50000次

**工作环境**

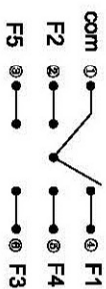
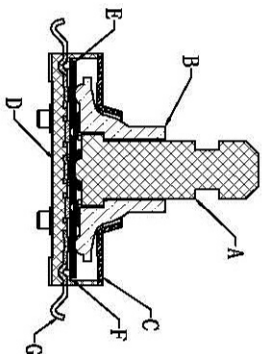
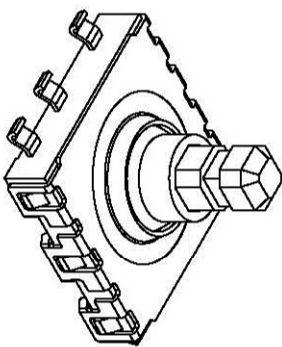
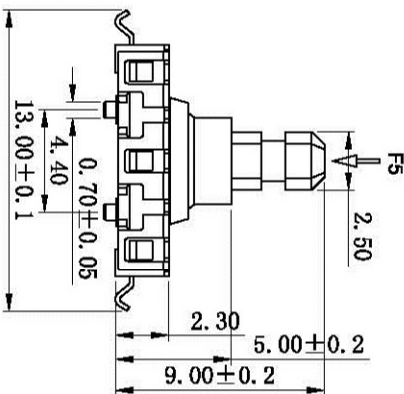
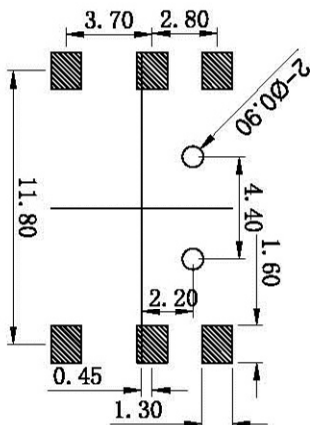
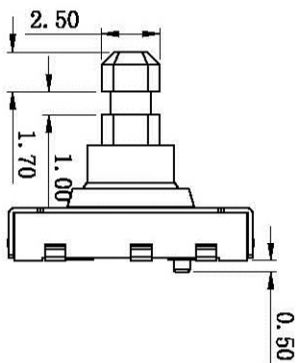
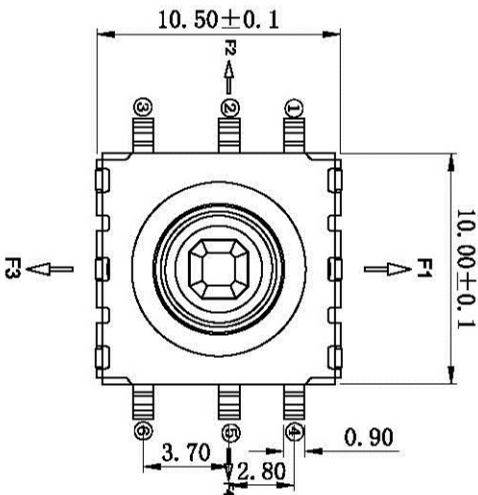
环境温度: -30°C~85°C

**电气性能**

额定电流: 0.1A  
 额定电压: DC12V  
 接触电阻: ≤80mΩ  
 绝缘电阻: ≥100MΩ  
 耐压强度: AC250V 50Hz/1min

**物料**

- A. 按钮: PA46
- B. 梅花护套: LCP
- C. 盖板: SUS
- D. 底座: PA10T
- E. 接触垫片: 复银铜
- F. 弹片: 复银不锈钢
- Q. 嵌件: 磷铜



■ 电路图

	①	②	③	④	⑤	⑥
F1	□	□	□	□	□	□
F2	□	□	□	□	□	□
F3	□	□	□	□	□	□
F4	□	□	□	□	□	□
F5	□	□	□	□	□	□

版本

视图

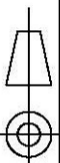
设计

敖余达

比例

大小

Dimensions are shown:mm(inches)



绘制

敖余达

1:1

A4

审核

徐君辉

深圳市博瑞泰电子有限公司