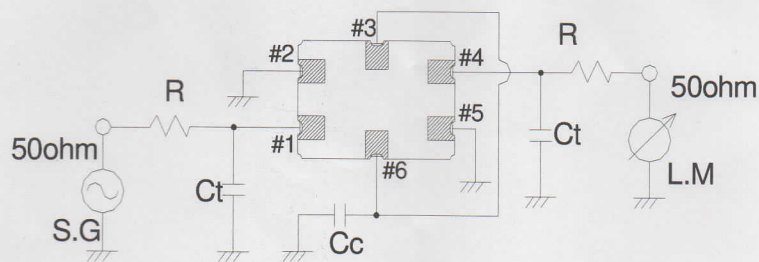


# MONOLITHIC CRYSTAL FILTER SPECIFICATION

1/2

1.MODEL	D38830GQ3
2.PARTS NUMBER(USER)	
3.TYPE	DSF753SDF(4POLE)
4.ELECTRICAL PERFORMANCES	
4-1.Nominal Frequency	38.850 MHz ( Fundamental )
4-2.Passband Width	+/- 15.0 kHz MIN./ 3dB
4-3. Stopband Width	+/- 25.0 kHz MAX./ 10dB
4-4. Insertion Loss	4.0 dB MAX./ (MINIMUM LOSS)
4-5. Ripple	1.0 dB MAX.
4-6. Guaranteed Attenuation	75 dB MIN./ (f0±910kHz)
4-7.Spurious Response	30 dB MIN./ (f0+100kHz~+1000kHz)
4-8.Terminal Impedance	1620 ohm+/-10% 0.3 pF+/-0.5pF
4-9.Insulation Resistance	500 M ohm MIN. / DC 100V ( Between Case and IN/OUT Terminal )
4-10. Maximum Input level	-10 dBm
4-11.Operating Temperature Range	-20 to +70 deg.C

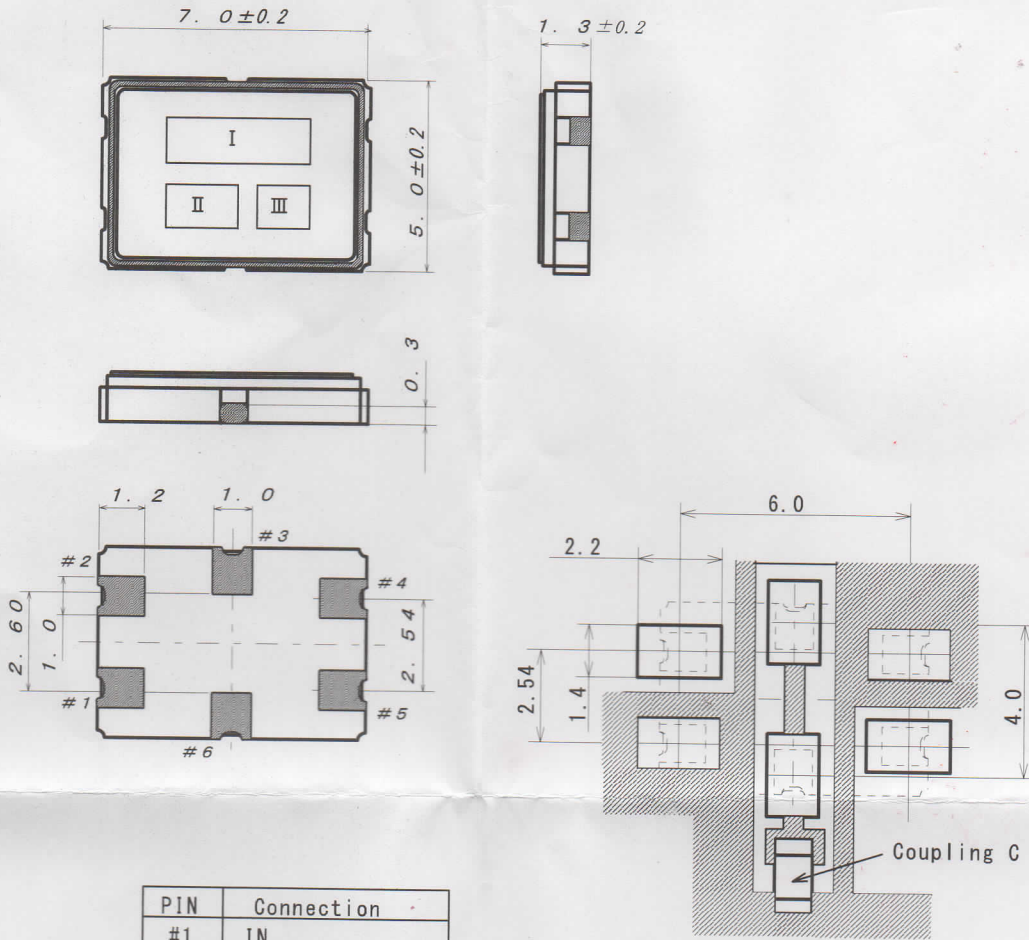
## 5.TEST CIRCUIT



R = 1570 ohm  
 Ct= 0.3 pF(floating capacity included)  
 Cc= 3.5 pF(floating capacity included)

			DWG. No.
	DATE	2013/05/27	

6. Dimensions



PIN	Connection
#1	IN
#2	GND
#3	Connect With #6
#4	OUT
#5	GND
#6	Connect With #3

7. Marking

- ( I ) Model 38830GQ3
- ( II ) Maker KDS
- ( III ) Manufactured Year Month(\*1) 9K
  - (\*1)Year The last digit of the year of the Christian Era should be corresponded to the Arabic figures.

JAN.	FEB.	MAR.	APR.	MAY.	JUN.	JUL.	AUG.	SEP.	OCT.	NOV.	DEC.
A	B	C	D	E	F	G	H	J	K	L	M

				DWG. No.
		DATE	2013/05/27	