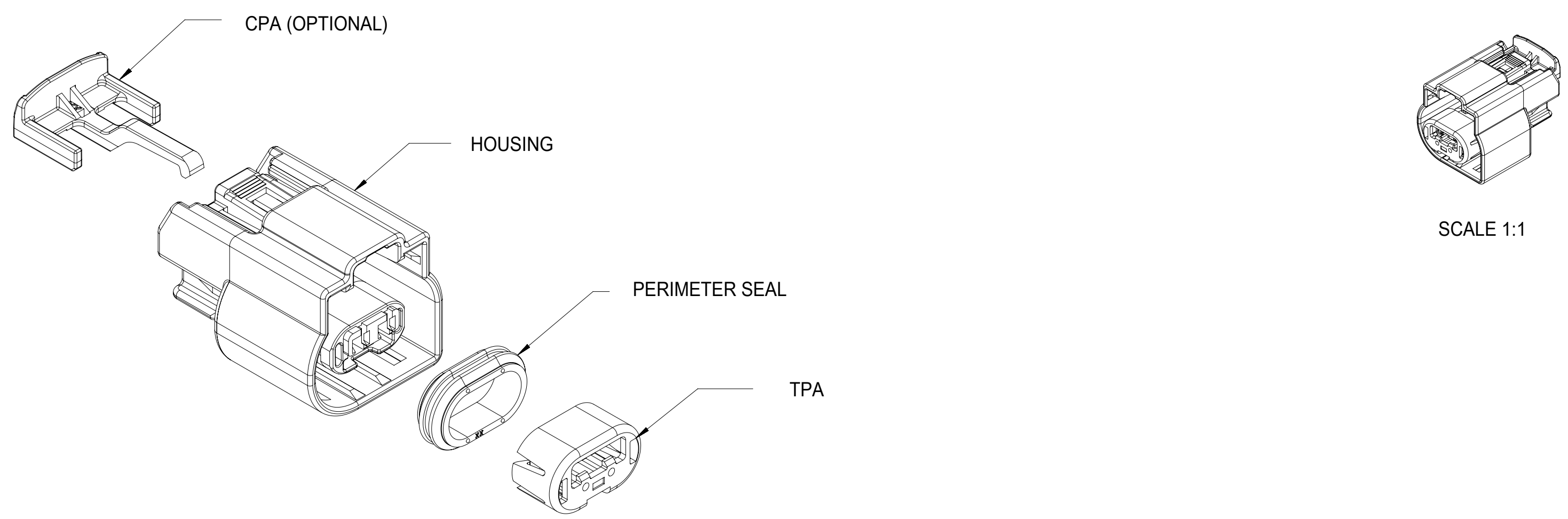
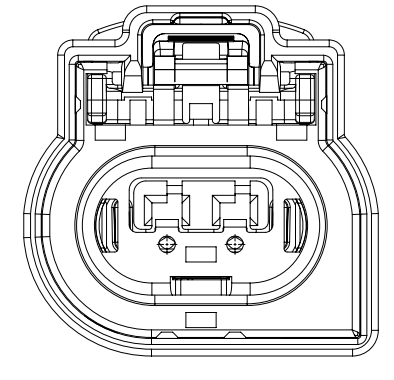


ASSEMBLY NUMBER	KEYING OPTION	COLOR	CPA	STATUS	MODEL NUMBER
34752-0200	A	BLACK		SALEABLE	EM-34752-020
34752-0201	B	LT. GRAY		CONCEPT ONLY	EM-34752-021
34752-0202	C	DK. GRAY		CONCEPT ONLY	EM-34752-022
34752-0203	D	STONE GRAY		CONCEPT ONLY	EM-34752-023
34752-0204	A	BLACK	X	SALEABLE	EM-34752-020
34752-0205	B	LT. GRAY	X	CONCEPT ONLY	EM-34752-021
34752-0206	C	DK. GRAY	X	CONCEPT ONLY	EM-34752-022
34752-0207	D	STONE GRAY	X	CONCEPT ONLY	EM-34752-023

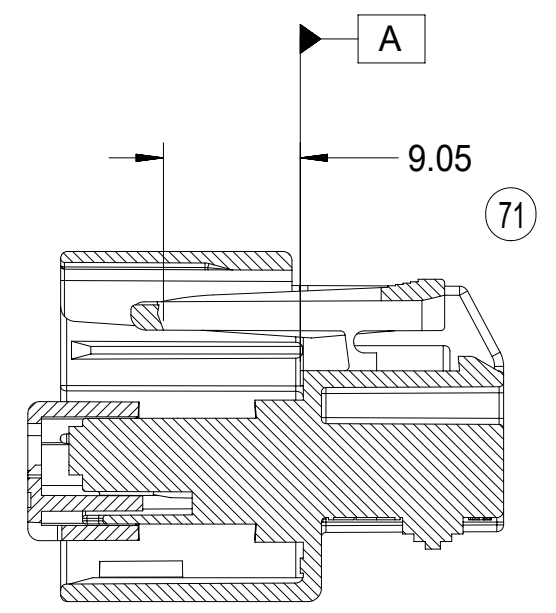
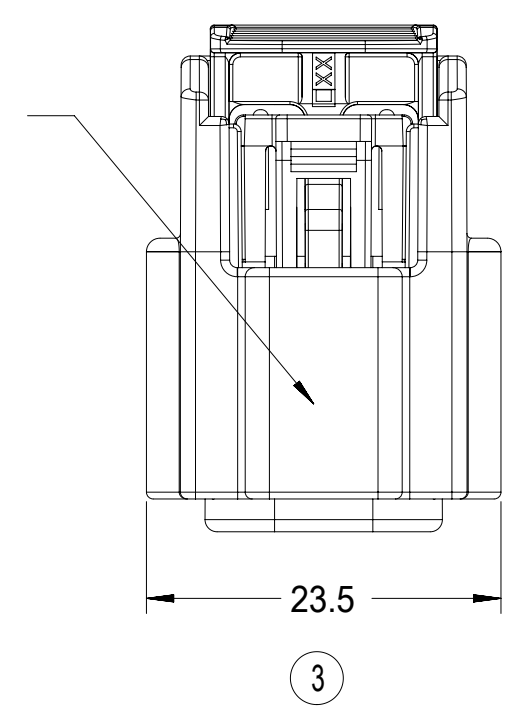


SCALE 1:1

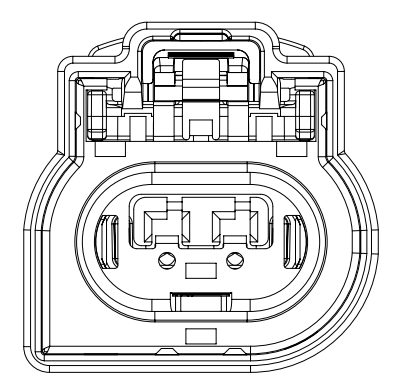


KEYING OPTION A

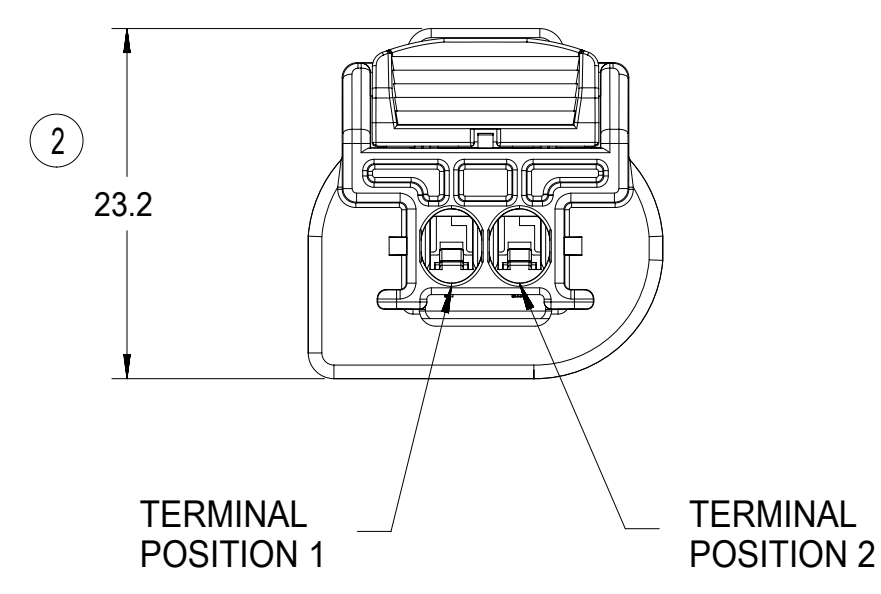
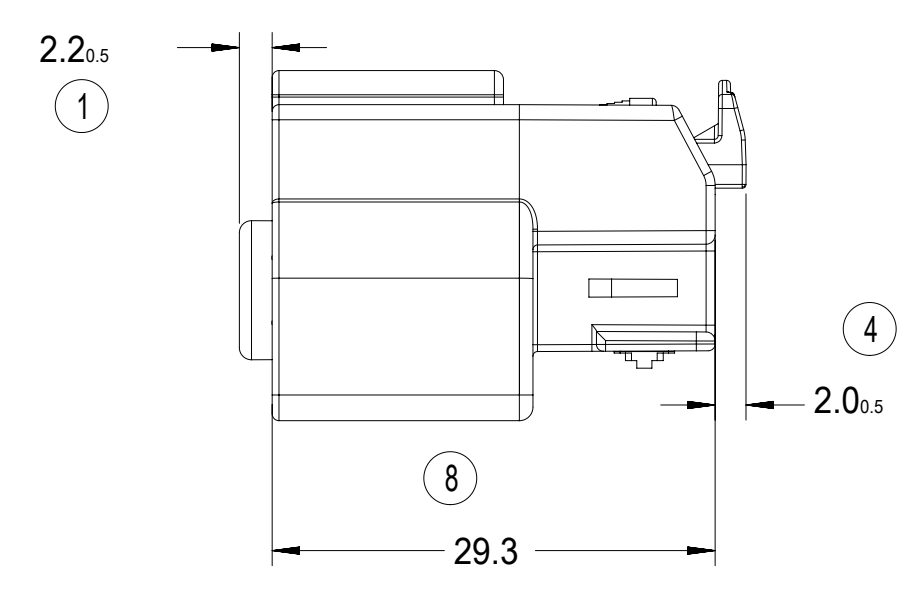
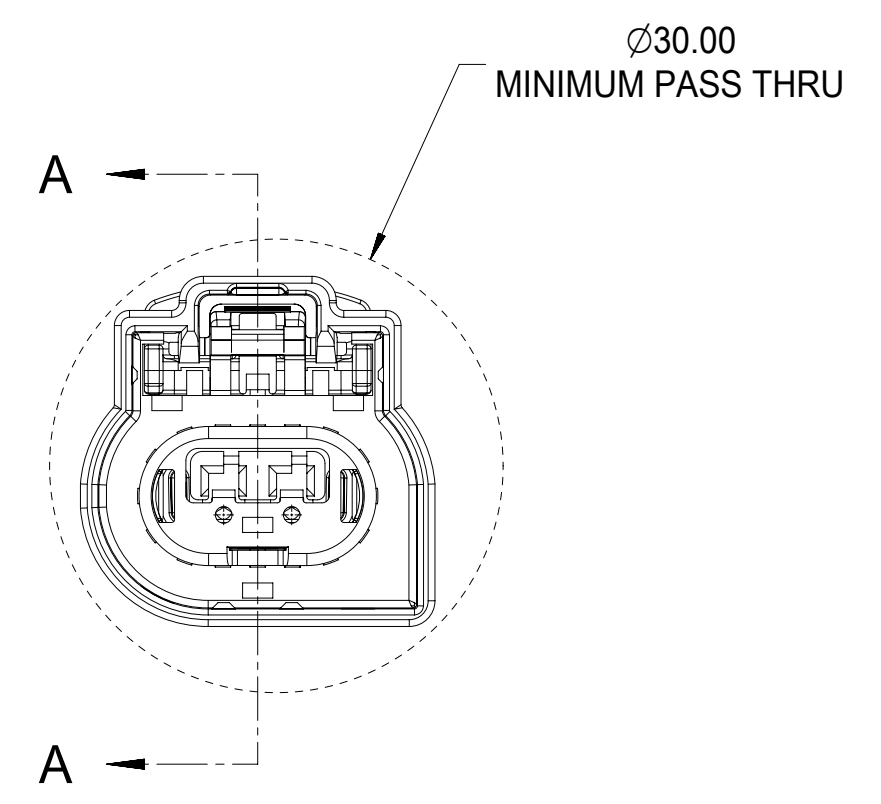
LASER MARKING APPLIED TO THIS SURFACE TO INCLUDE: MOLEX P/N AND DATE CODE SEE NOTE 1d



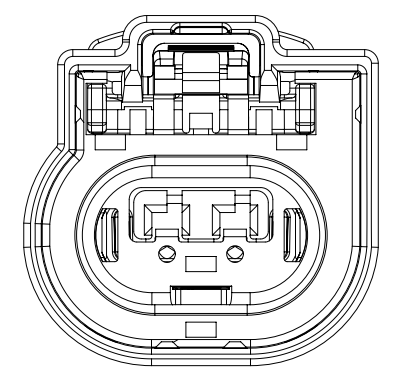
SECTION A-A



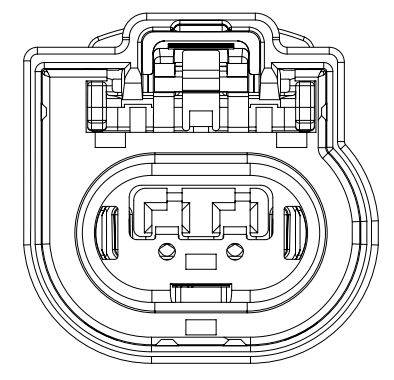
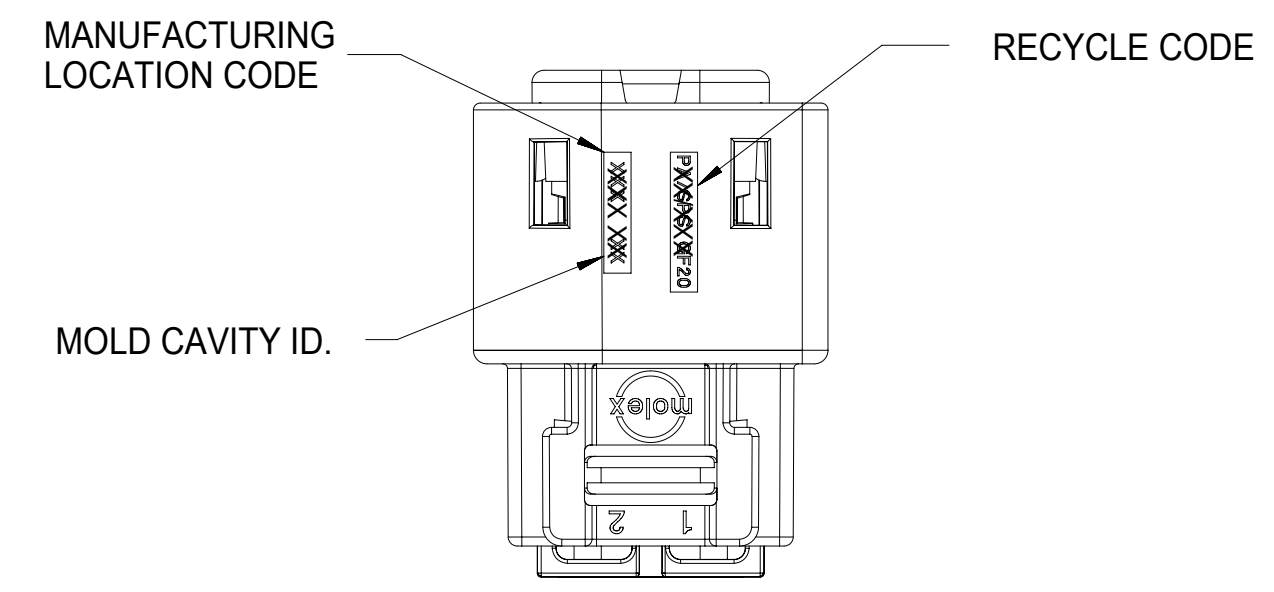
KEYING OPTION B



TERMINAL POSITION 1
TERMINAL POSITION 2



KEYING OPTION C



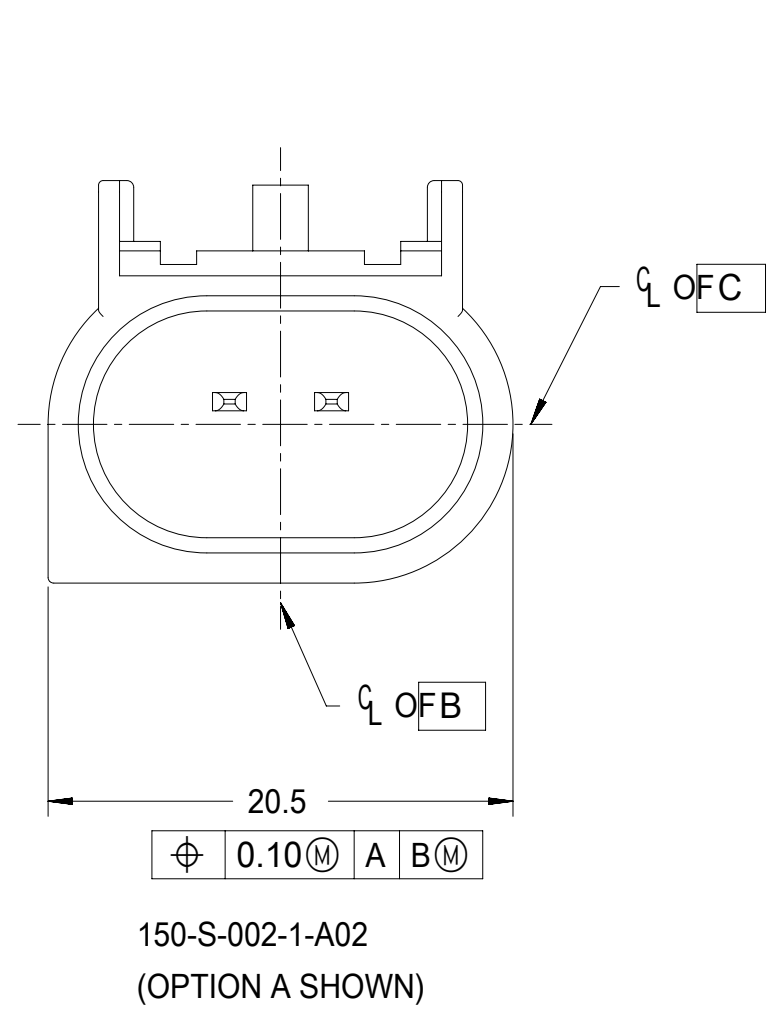
KEYING OPTION D

NOTES: VALID UNLESS OTHERWISE SPECIFIED

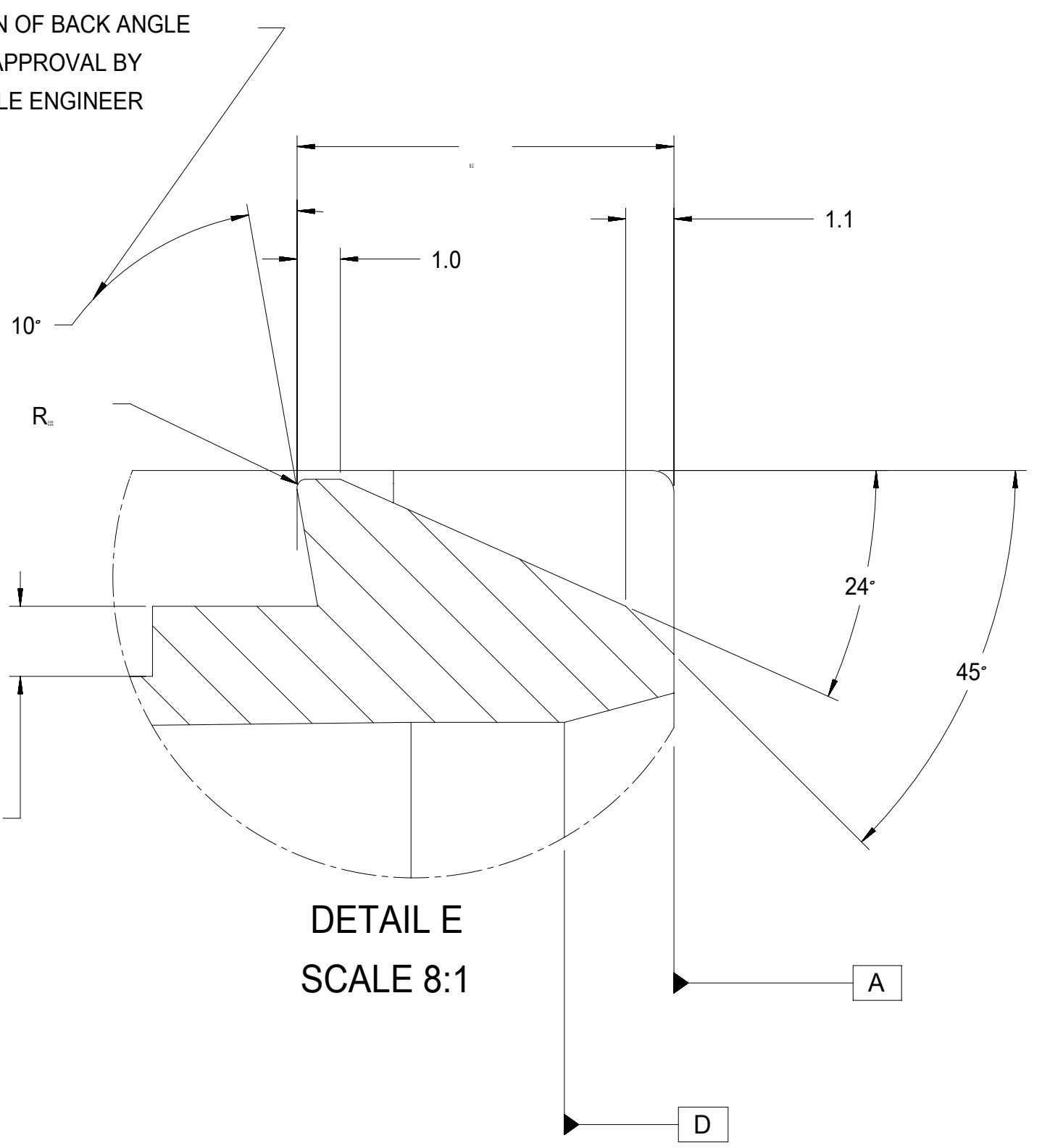
1. GENERAL:
 - a. PRODUCT SPECIFICATION SEE MOLEX DOCUMENT: PS-34752-001
 - b. PACKAGING SPECIFICATION PER MOLEX DRAWING: PK-31300-635
 - c. APPLICATION SPECIFICATION SEE MOLEX DOCUMENT: AS-34752-001
APP. SPEC. CONTAINS THE FOLLOWING INFORMATION
 - › APPROPRIATE TERMINALS TO BE USED
 - › PLR / CPA USAGE
 - › MATING INTERFACES
 - d. DATE CODE: FIRST TWO DIGITS IS CALENDAR YEAR, THIRD THRU FIFTH DIGIT IS DAY NUMBER OF THE CALENDAR YEAR (FEB. 3RD, 2003 = 0341)
 - e. PARTS MUST BE IN COMPLIANCE TO MOLEX CHEMICAL SUBSTANCES FOR PRODUCTS AND PACKAGING SPECIFICATION: ES-40000-5016
 - f. DATA MUST BE SUBMITTED UNDER THE MOLEX PART NUMBER TO IMDS (COMPANY ID#13255)
2. DESIGN - MATERIALS:
 - a. HOUSING: SPS/NYLON BLEND, 20% GLASS FILLED, 20 % MAX REGRIND
COLOR: SEE TABLE
 - b. TPA: SPS/NYLON BLEND, 20% GLASS FILLED, 20 % MAX REGRIND
COLOR: NATURAL
 - c. CPA: PBT 30% GLASS FILLED, 20% MAX REGRIND
COLOR: RED
 - d. PERIMETER SEAL: INHERENTLY LUBRICATED SILICONE, 50 DUROMETER
COLOR: DK BLUE
3. PACKAGING: IN THE EVENT THAT INERT IS FOUND IN THE SEATED (FINAL LOCK) POSITION, REFER TO MOLEX SPECIFICATION PS-34646-001, AVAILABLE AT WWW.MOLEX.COM

THIS DRAWING CONTAINS INFORMATION THAT IS PROPRIETARY TO MOLEX ELECTRONIC TECHNOLOGIES, LLC AND SHOULD NOT BE USED WITHOUT WRITTEN PERMISSION									
QUALITY SYMBOLS	2017/05/31	2017/07/11	GENERAL TOLERANCES (UNLESS SPECIFIED)		DIMENSION UNITS	SCALE			
			ANGULAR TOL ± 3.0 °		MM	2:1			
▽ = 0	EC NO: 118883 DRWN: PKABBUR CHKD: REV APPR: KDEKOSKI	2017/05/31	4 PLACES ±	M.VANSLAMBRO	DATE	9/16/08	MX150 CABLE SEAL SINGLE ROW, RECEPTACLE 1X2, ASSEMBLY		
▽ = 0			3 PLACES ±	S.VERZYL	DATE	9/16/08			
▽ = 0			2 PLACES ± 0.1	V.KOSHY	DATE	9/16/08	PRODUCT CUSTOMER DRAWING		
▽ = 0			1 PLACE ± 0.2	DRAWING SIZE		THIRD ANGLE PROJECTION	SERIES	MATERIAL NUMBER	CUSTOMER
▽ = 0			0 PLACES ±	DRAFT WHERE APPLICABLE MUST REMAIN WITHIN DIMENSIONS	D	⊕	34752	SEE TABLE	GENERAL MARKET
▽ = 0							DOCUMENT NUMBER	DOC TYPE	DOC PART
					E1	SD-34752-020	PSD	000	1 OF 2

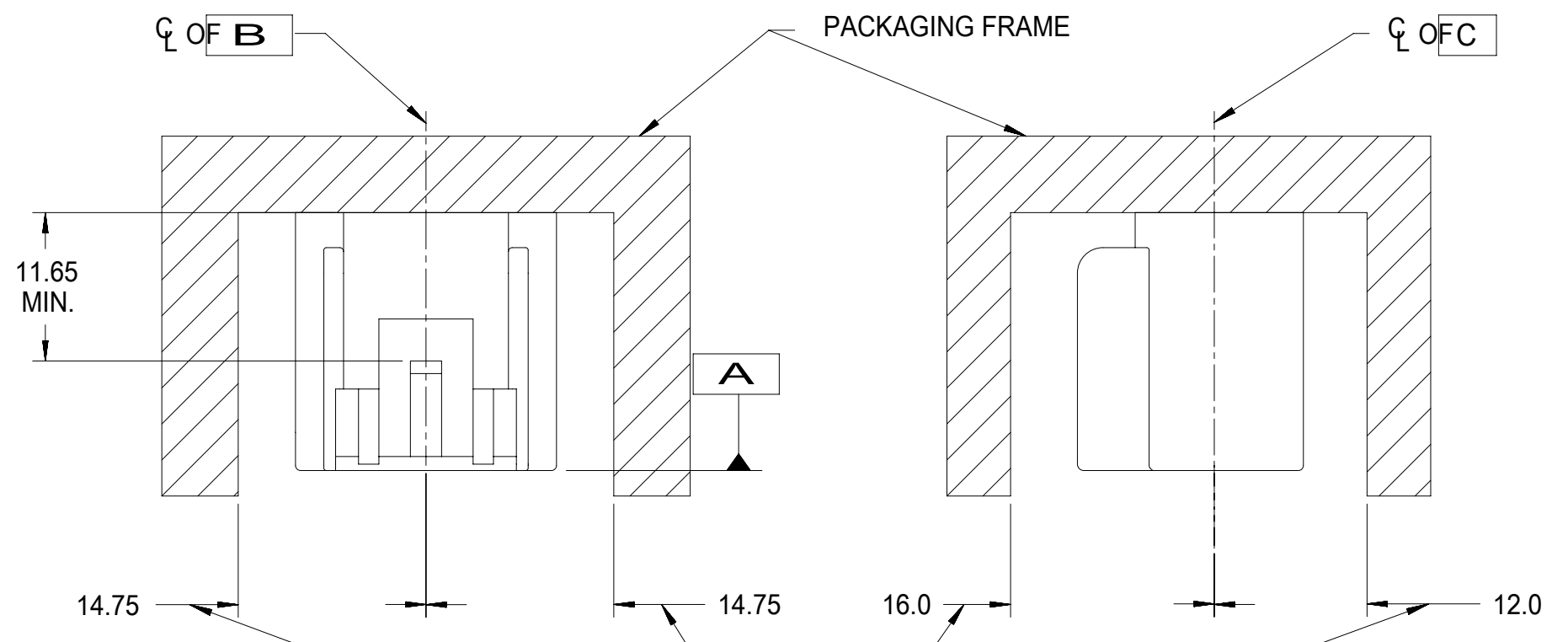
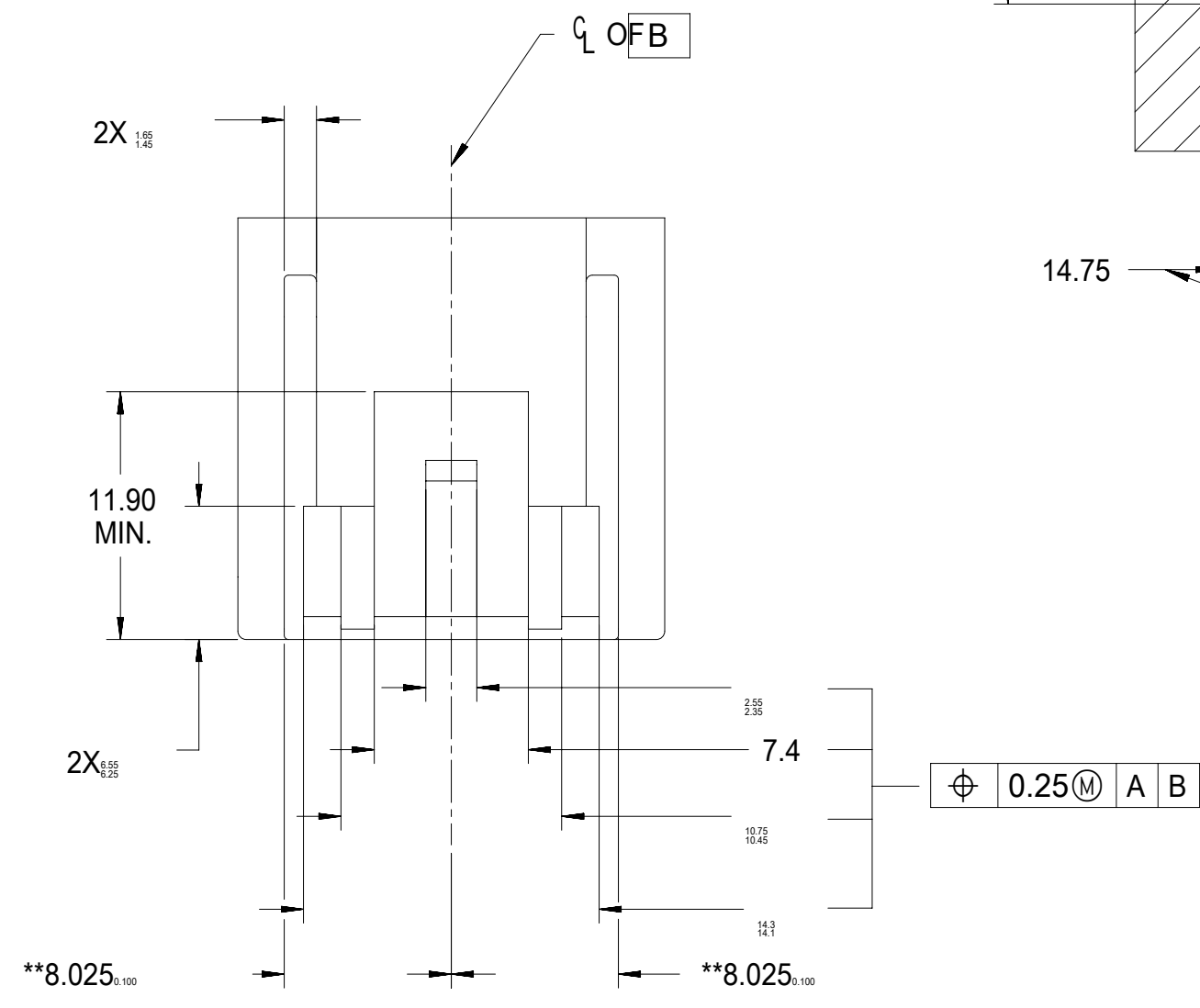
RELEASE STATUS	RELEASE DATE



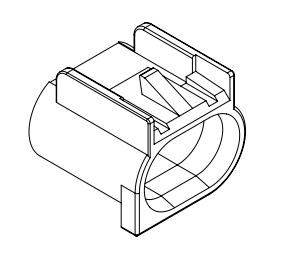
ELIMINATION OF BACK ANGLE
REQUIRES APPROVAL BY
RESPONSIBLE ENGINEER



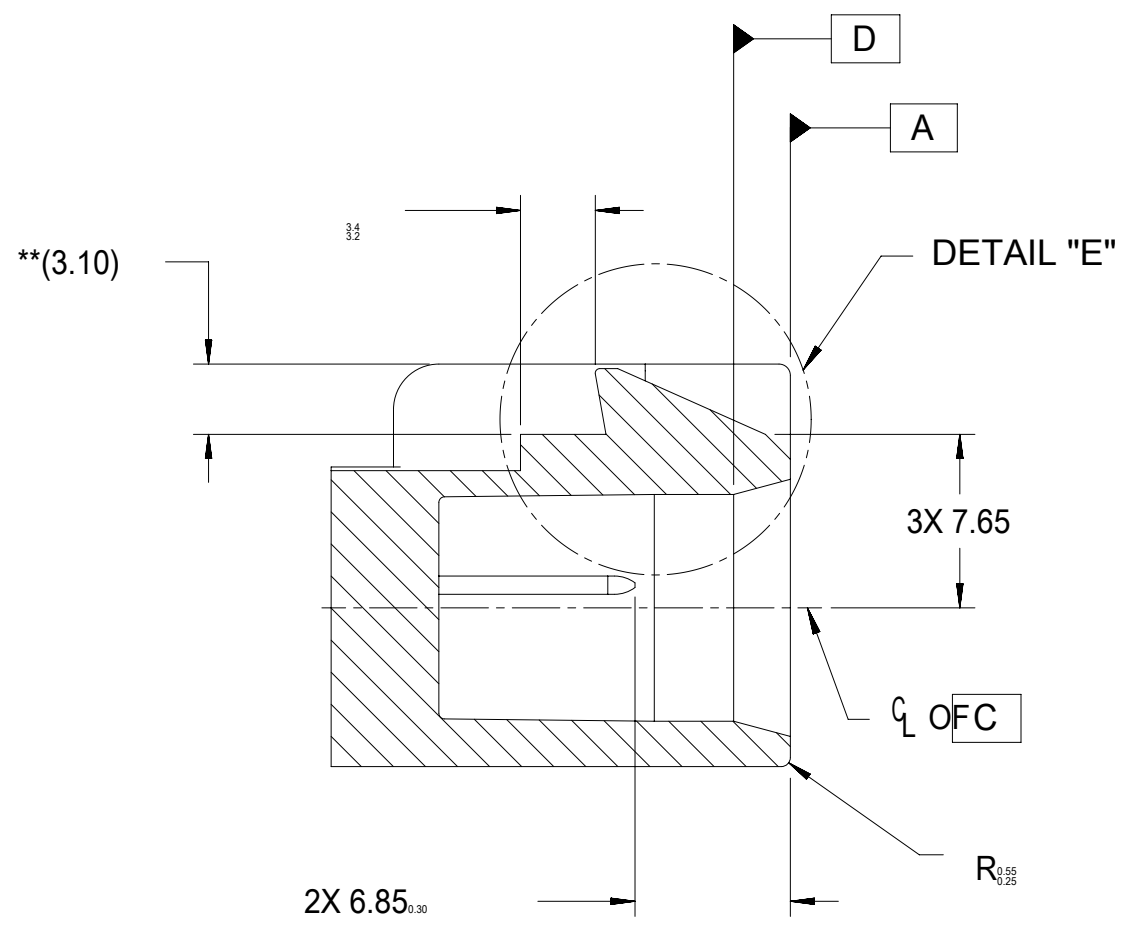
DETAIL E
SCALE 8:1



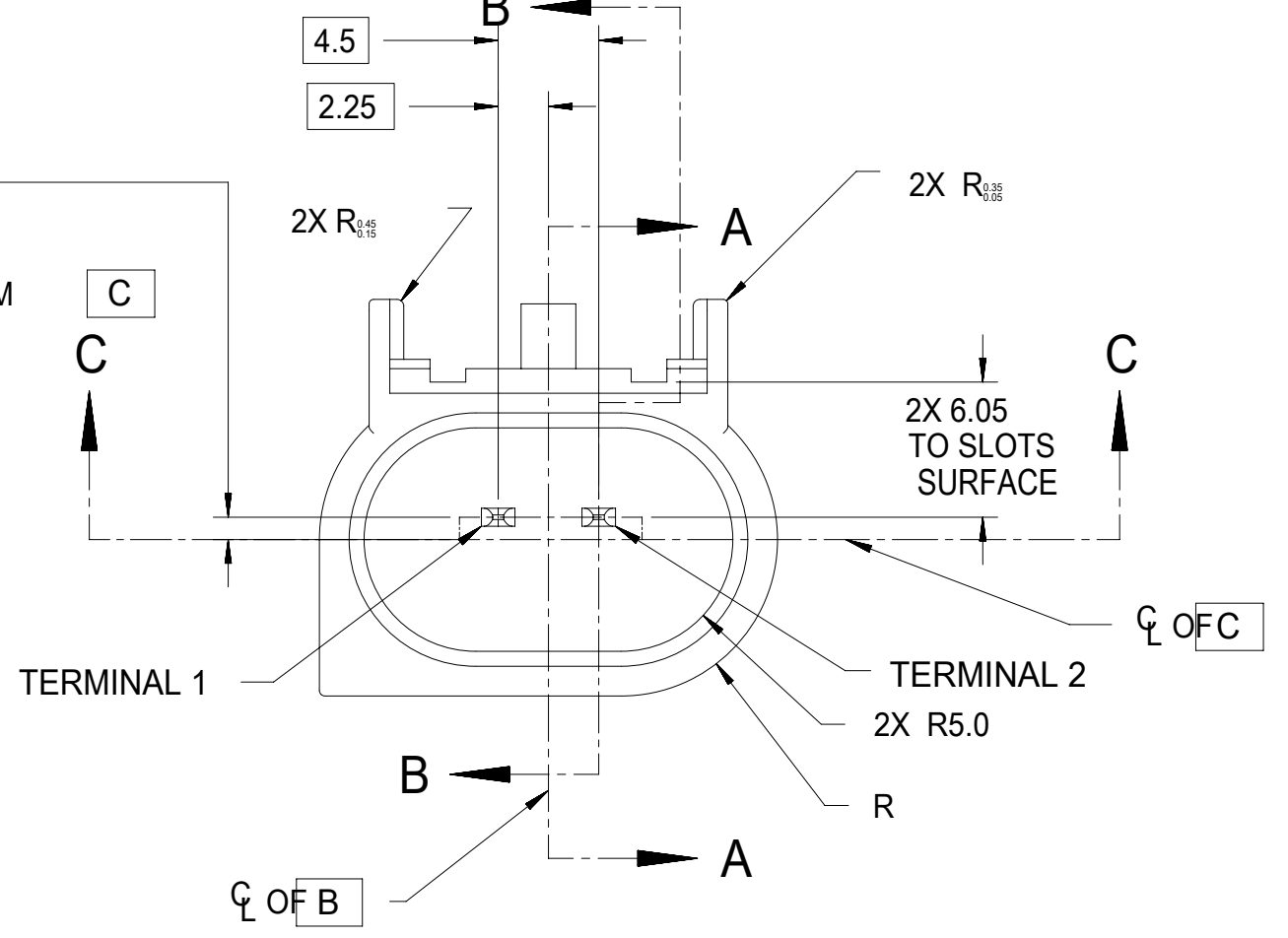
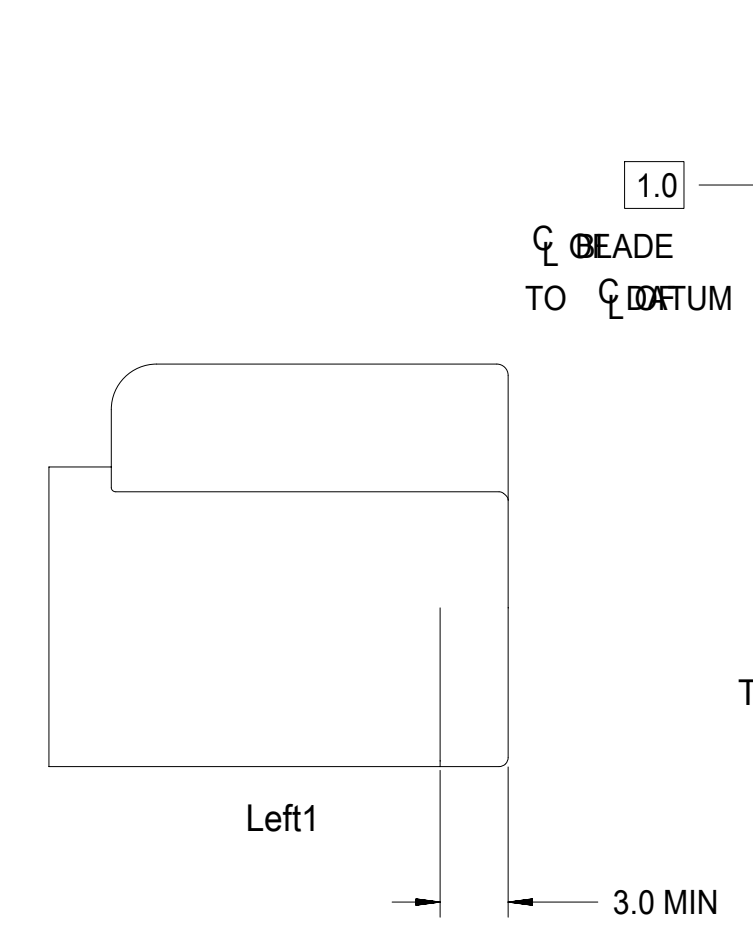
IF HEADER IS RECESSED INTO A POCKET, THESE DIMENSIONS REPRESENT
THE CLEARANCE REQUIRED FOR THE MATING CONNECTOR SHROUD



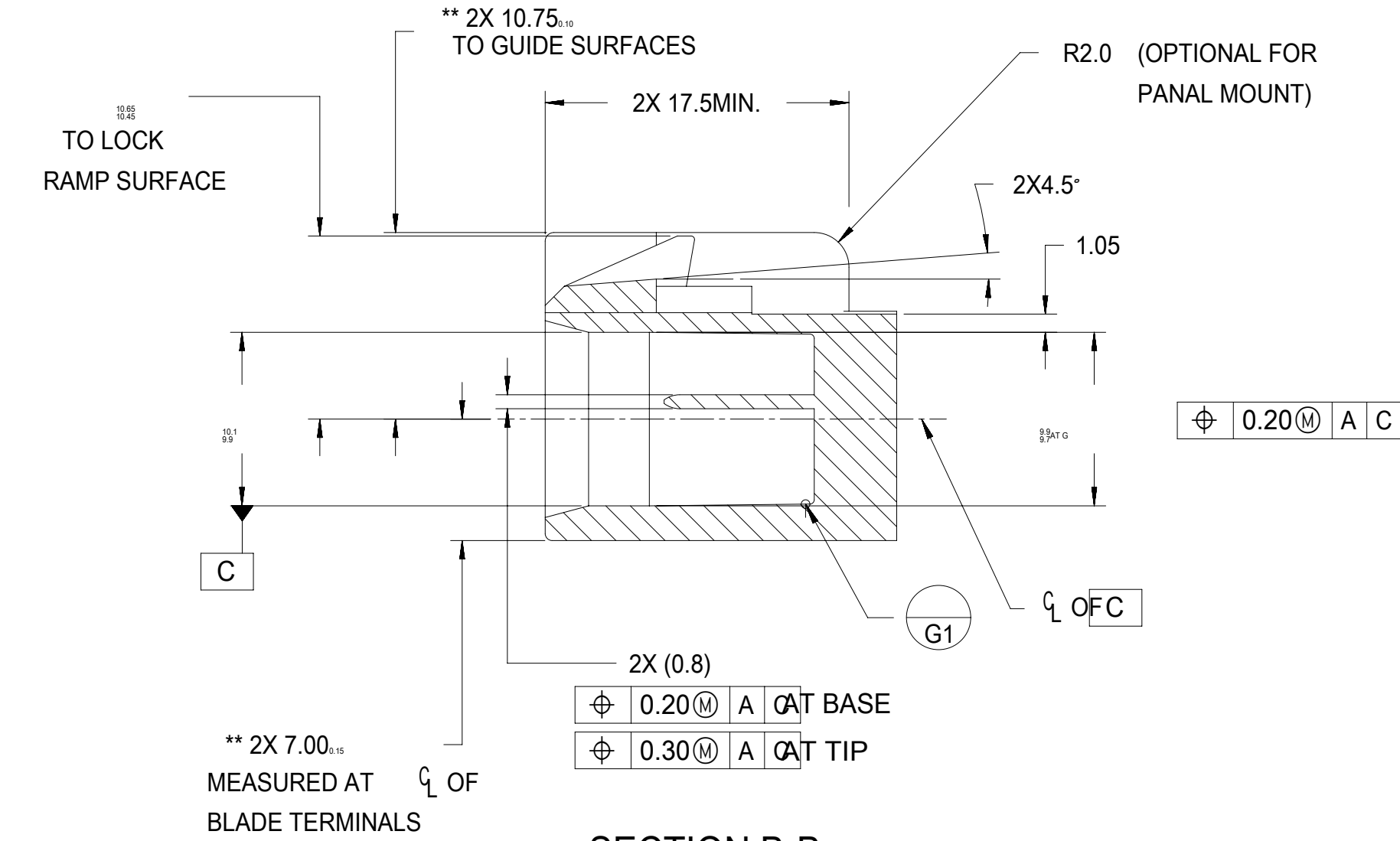
ISOMETRIC VIEW
OPTION A
SCALE: 1:1



SECTION A-A

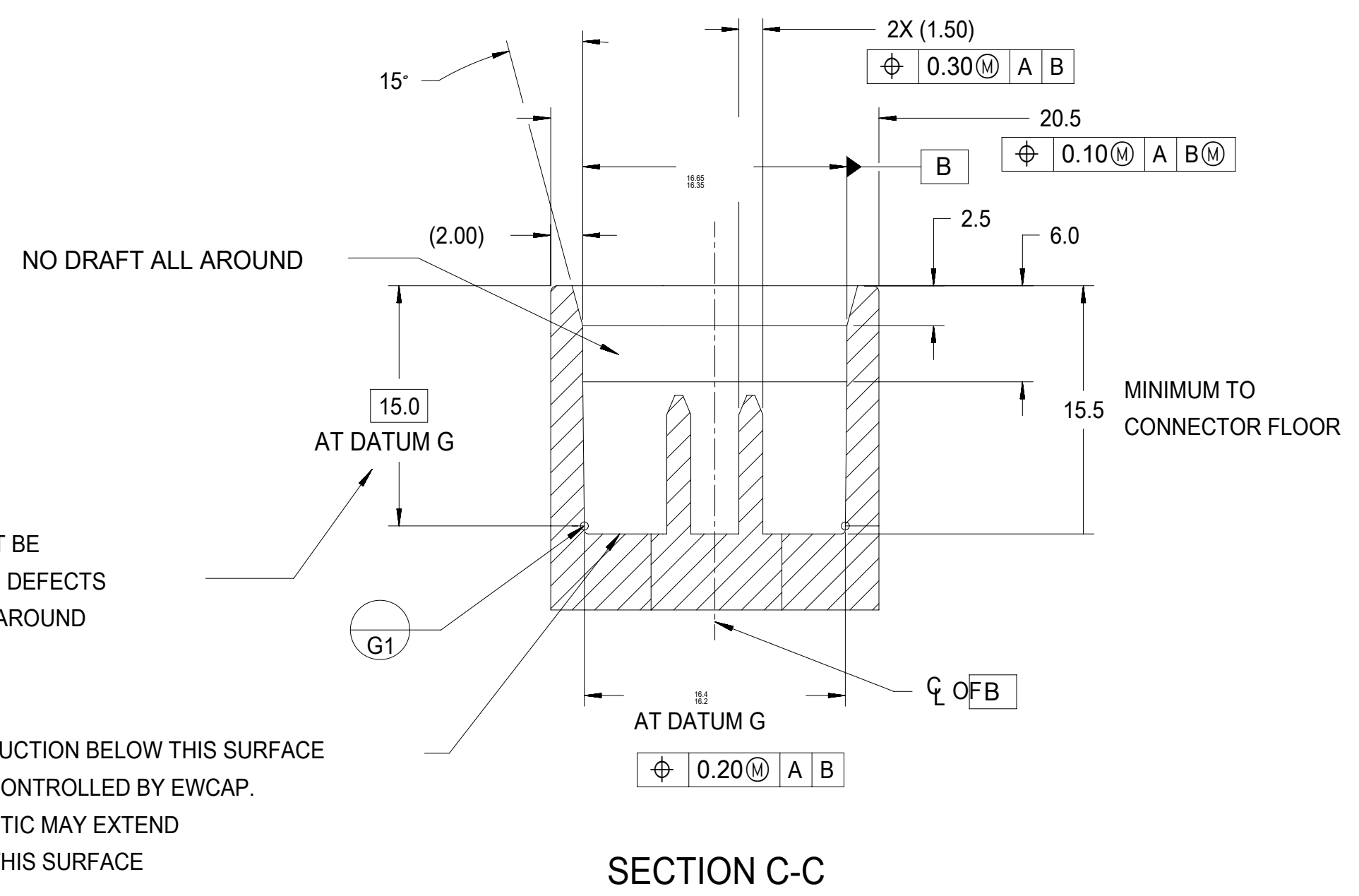


TERMINAL 1
TERMINAL 2
2X R5.0
2X 6.05 TO SLOTS SURFACE
C of B



SECTION B-B

- NOTES:
1. ALL DIMENSIONS SHOWN IN MILLIMETERS
 2. DIMENSIONING AND TOLERANCING PER ASME Y14.5M-1994.
 3. RADII ON ALL CORNERS SHOWN SHARP OR ALL UNSPECIFIED RADII: 0.25 EXCEPT AS NOTED
UNSPECIFIED TOLERANCES ARE AS FOLLOWS
.X = 0.25
.XX = .13
ANGLES ±2°
 4. DESIGN IS BASED ON USCAR DWG. 150-S-002-1-Z02 REV K EXCEPT DIMENSIONS MARKED WITH ** REFER TO "SAE/USCAR-12 CONNECTOR DESIGN GUIDELINES FOR ADDITIONAL INFORMATION.
 5. STANDARD COLORS FOR POLARIZATION - DEVIATION REQUIRES APPROVAL OF AUTHORIZED PERSONS.
 6. SECTION LINES ARE COMMON TO ALL OPTIONS.
 7. 1° DRAFT MAX ON OUTSIDE SURFACES PERMISSIBLE WITHIN ALLOWABLE TOLERANCE.
 8. DIMENSIONS IN () ARE FOR REFERENCE.
 9. FOR BLADE GEOMETRY AND PLATING REQUIREMENTS REFER TO EWCAP DWG. NO. EWCAP-001 REV F, DETAIL 150-T001
 10. DIRECTION OF DRAFT REQUIRED.



SECTION C-C

DIMENSION MUST BE FREE OF SURFACE DEFECTS FOR SEALING ALL AROUND

CONSTRUCTION BELOW THIS SURFACE IS NOT CONTROLLED BY EWCAP. NO PLASTIC MAY EXTEND ABOVE THIS SURFACE

150-S-002-D02	D	GREEN
150-S-002-C02	C	BROWN
150-S-002-B02	B	GREY
150-S-002-A02	A	BLACK
EWCAP P/N	OPTION	MATING CONNECTOR COLOR

QUALITY SYMBOLS		THIS DRAWING CONTAINS INFORMATION THAT IS PROPRIETARY TO MOLEX ELECTRONIC TECHNOLOGIES, LLC AND SHOULD NOT BE USED WITHOUT WRITTEN PERMISSION		GENERAL TOLERANCES (UNLESS SPECIFIED)		DIMENSION UNITS		SCALE			
▽ = 0	▽ = 0	▽ = 0	▽ = 0	▽ = 0	▽ = 0	MM	3:1	DRWN BY DATE			
▽ = 0	▽ = 0	▽ = 0	▽ = 0	▽ = 0	▽ = 0	ANGULAR TOL ± 3.0°	M.VANSLAMBRO 9/16/08		CHKD BY DATE		PRODUCT CUSTOMER DRAWING
▽ = 0	▽ = 0	▽ = 0	▽ = 0	▽ = 0	▽ = 0	4 PLACES ±	S.VERZYL 9/16/08		APPR BY DATE		
▽ = 0	▽ = 0	▽ = 0	▽ = 0	▽ = 0	▽ = 0	3 PLACES ±	V.KOSHY 9/16/08		DRAWING SIZE THIRD ANGLE PROJECTION		DOCUMENT NUMBER DOC TYPE DOC PART SHEET NUMBER
▽ = 0	▽ = 0	▽ = 0	▽ = 0	▽ = 0	▽ = 0	2 PLACES ± 0.1	DRAFT WHERE APPLICABLE MUST REMAIN WITHIN DIMENSIONS		D		
▽ = 0	▽ = 0	▽ = 0	▽ = 0	▽ = 0	▽ = 0	1 PLACE ± 0.2	E1		SD-34752-020 PSD 000 2 OF 2		
▽ = 0	▽ = 0	▽ = 0	▽ = 0	▽ = 0	▽ = 0	0 PLACES ±					